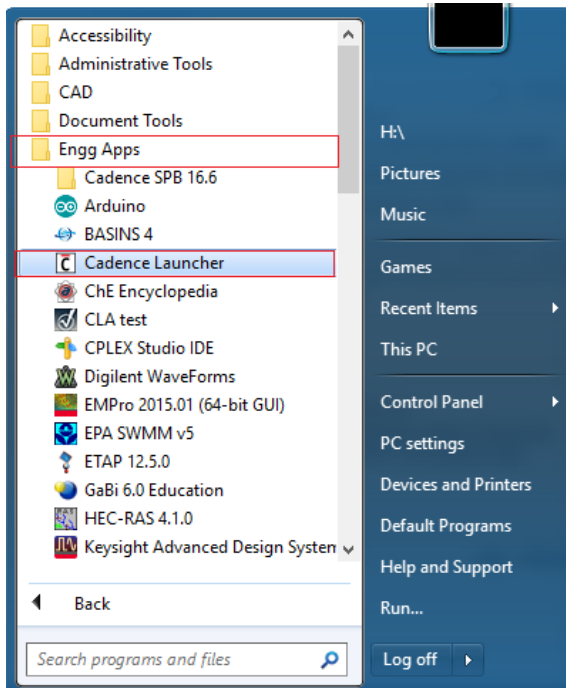

Using the Cadence Launcher

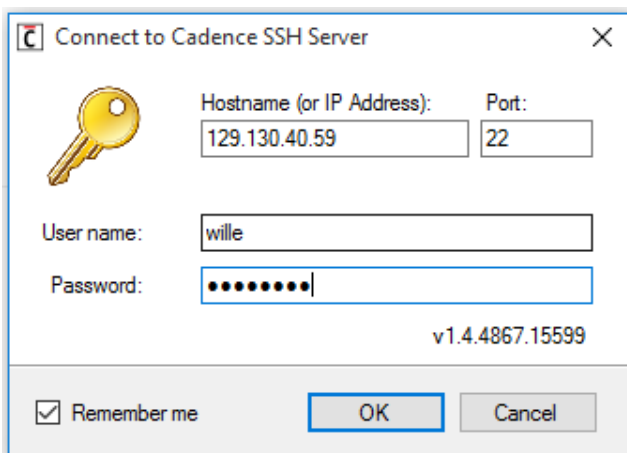
Starting in the Fall 2013 semester, the ECE department moved Cadence ICFB off of the local workstations and onto a central server. Access to Cadence is now done through the Cadence Launcher Tool. The tool automates the login, project creation and project launching steps. Below are the instructions on how to use the tool.

To start the Cadence Launcher Tool, navigate the following path:

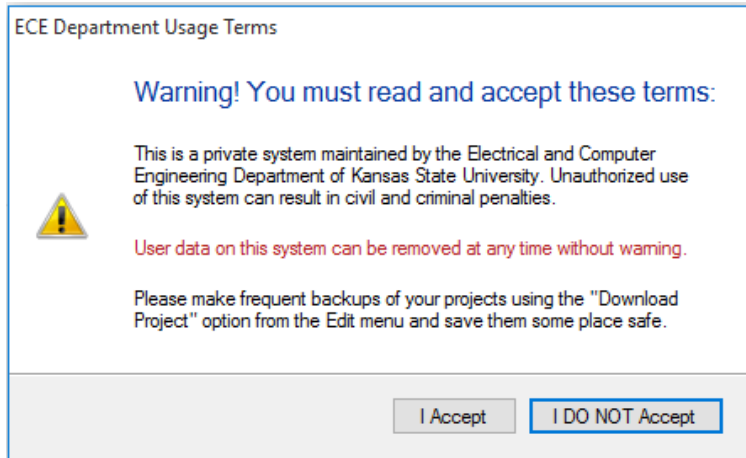
Start → Engg Apps → Cadence Launcher



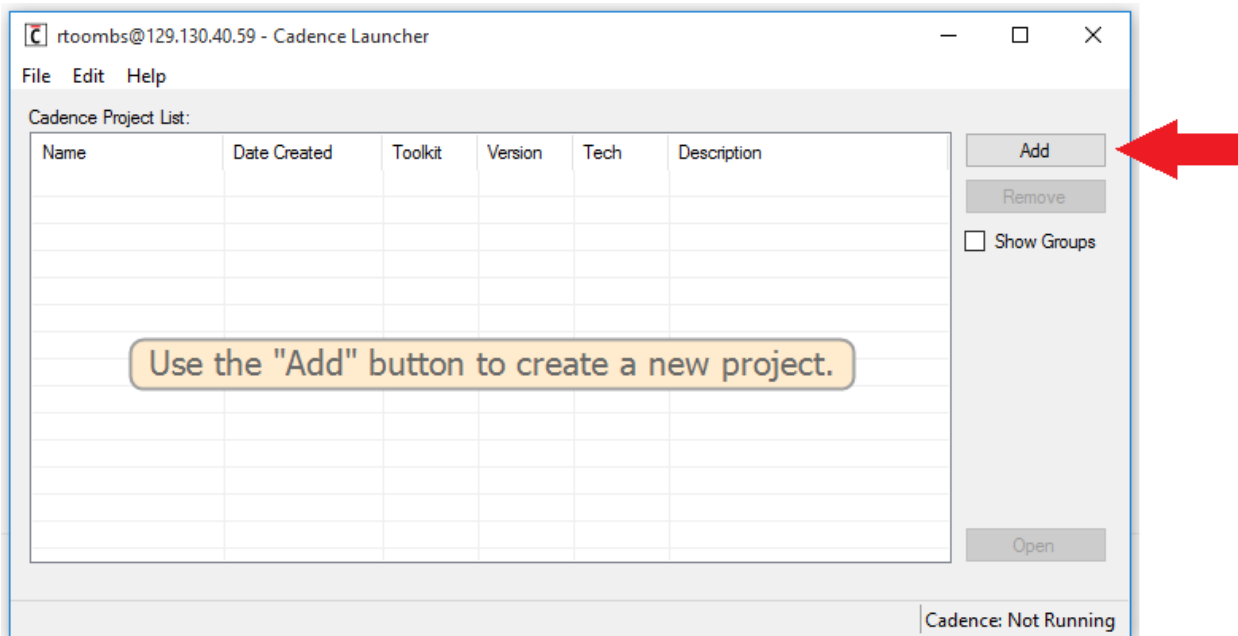
After opening the Cadence Launcher Tool, login to the Cadence server using your ENGG username and password. All of the other settings on the form should be left at their defaults.



It may take a few moments to get logged in. If the login is successful a warning should appear. Read the warning carefully! Make sure to do frequent backups of your work (how to do this will be covered later).

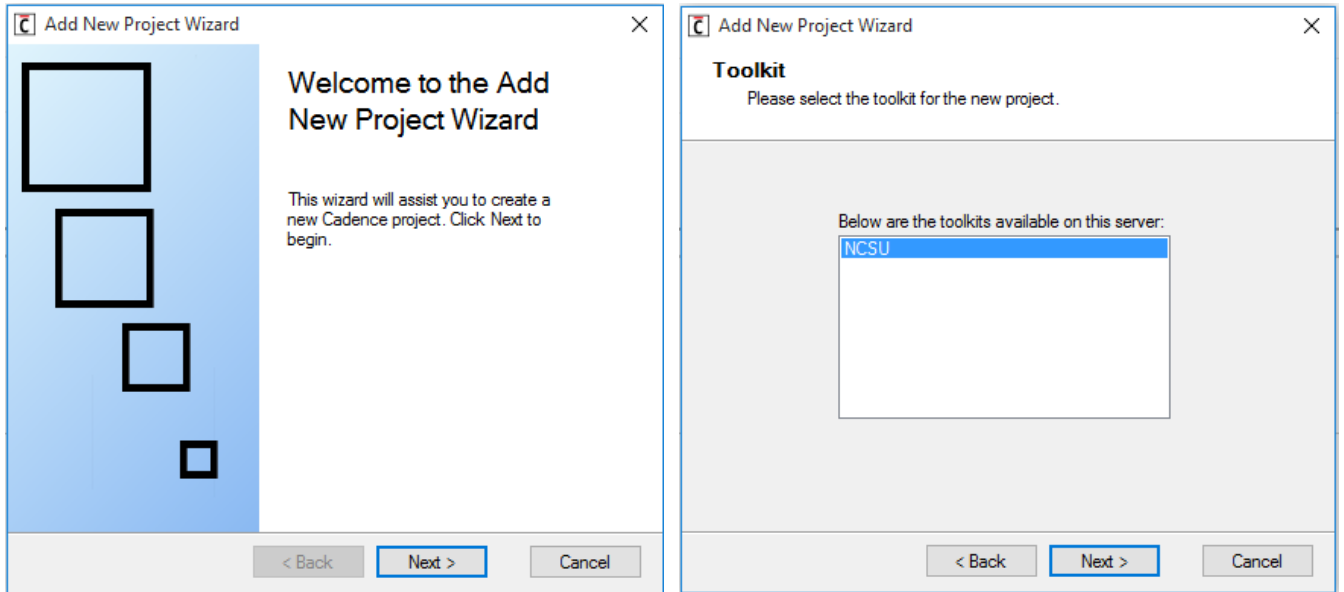


After you have logged in and accepted the conditions for using the Cadence system, you will be presented with the Project Management Window. From here you will be able to create, launch, download and delete projects. To add a new project, click the "Add" button on the right.



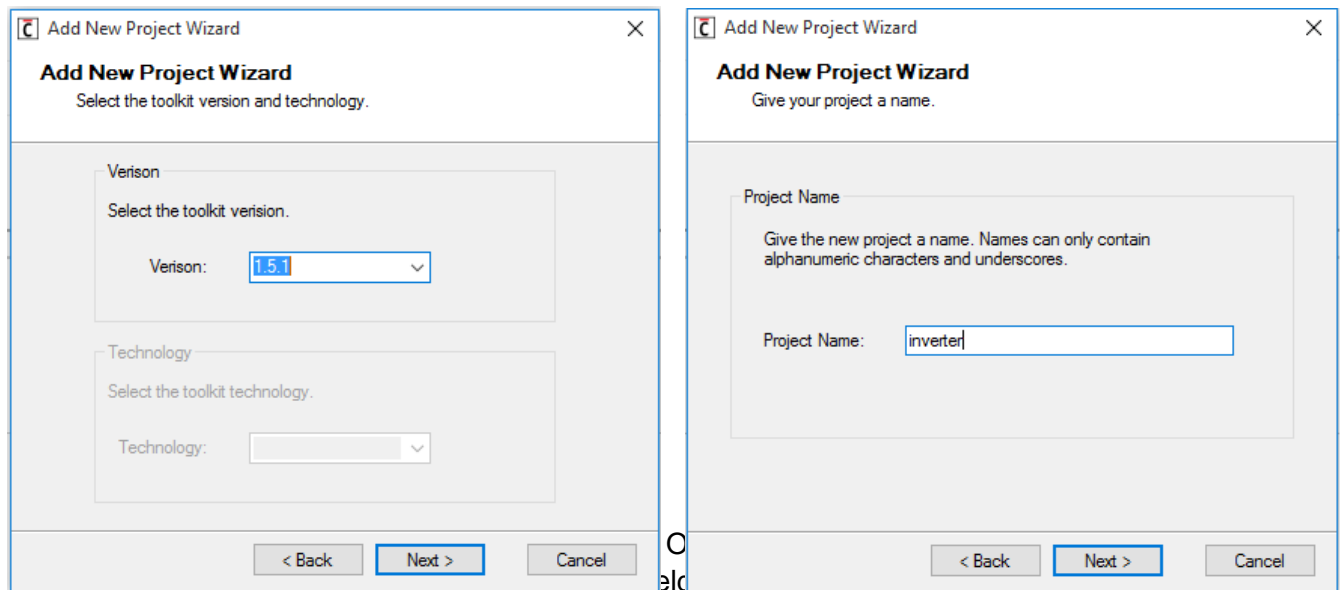
The “New Project Wizard” will automatically create and setup new projects on the remote Cadence server. Note that all of your work is stored on the server, it is not saved on your local machine!

For now, you will only have access to the NSCU (North Carolina State University) toolkit. Click “Next”

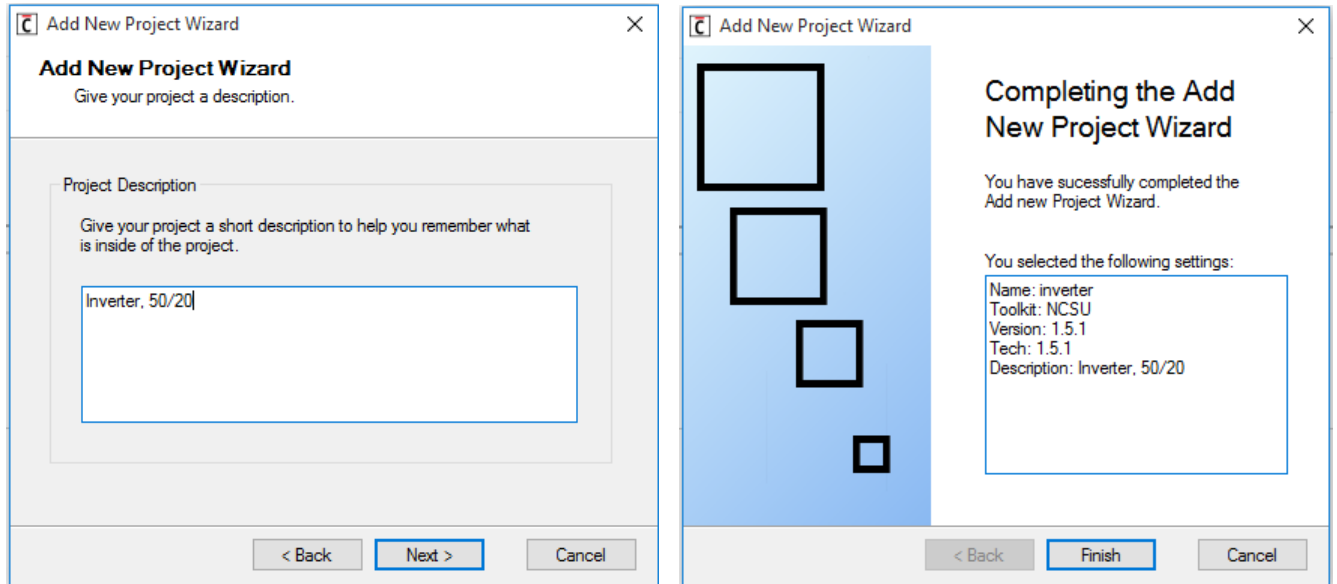


Select the version of the Toolkit you would like to use. As of writing of this guide, the only version available is 1.5.1. Click “Next.”

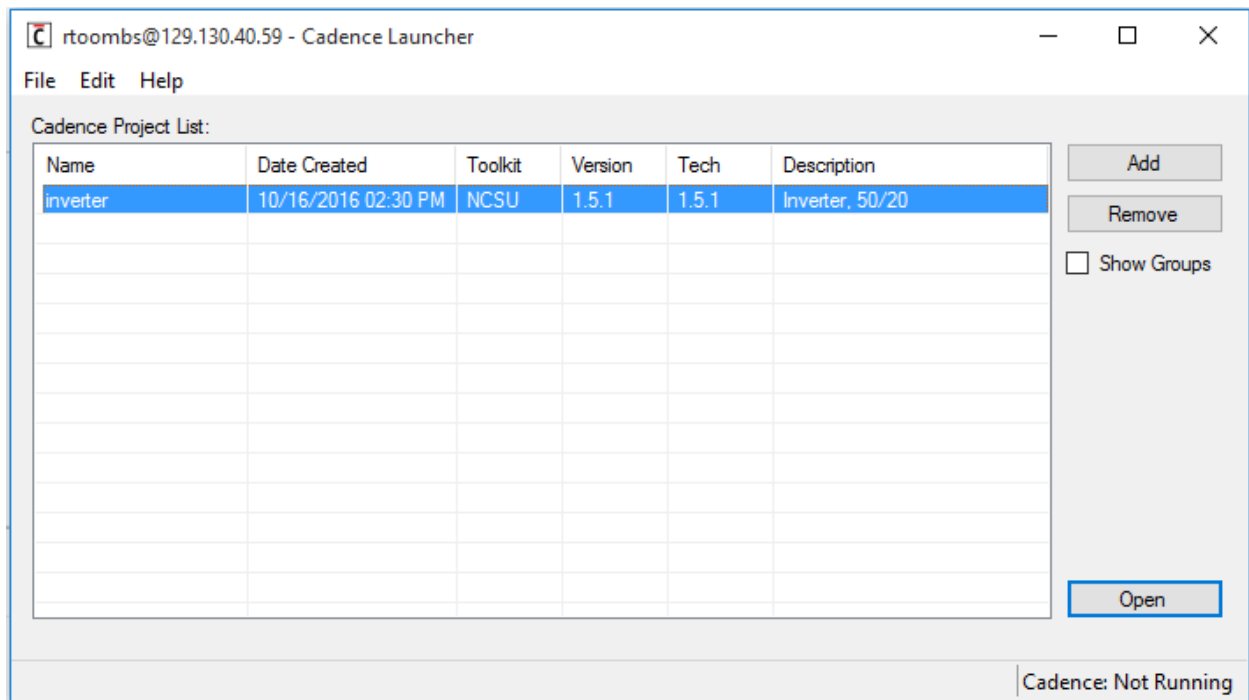
Give your project a meaningful name. Names can only be alphanumeric and cannot contain any spaces. After you have entered a project name, click “Next.”



Once the “Completion” screen verify that the settings for the new project are correct and then click “Finish.”

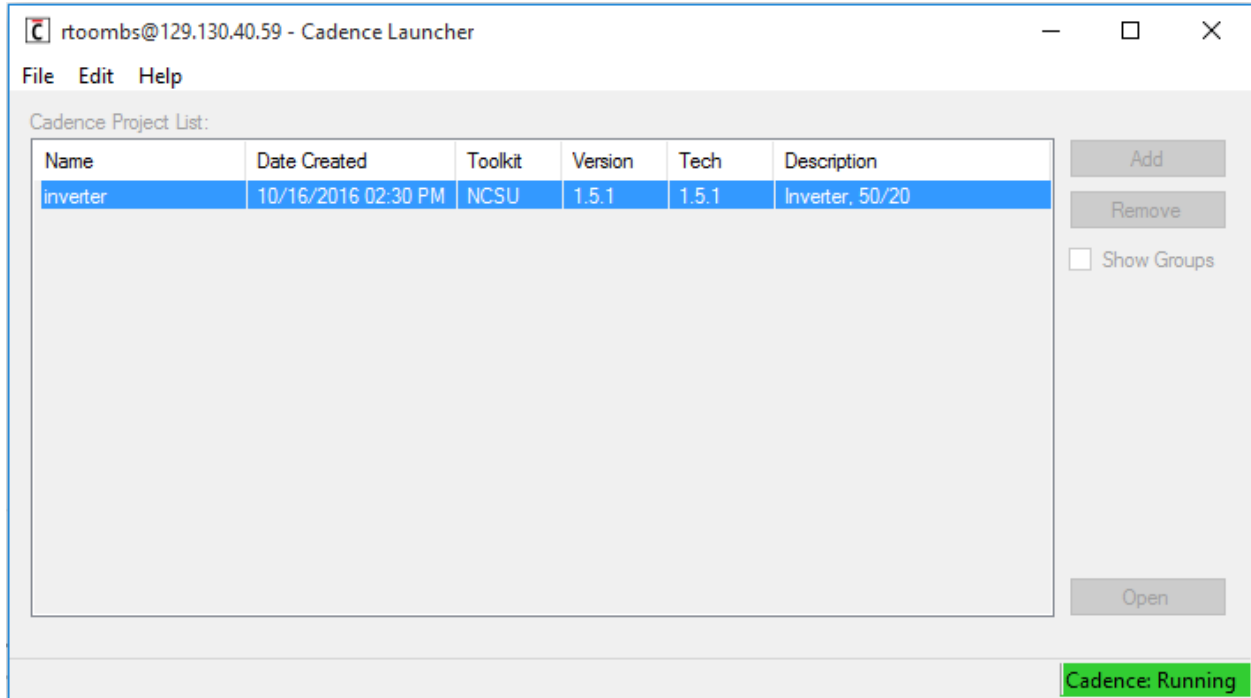


Your new project will then be created on the Cadence server and then added to the Project Management Window.



To open your new project, select it from the list and click “Open” on the bottom right of the Project Management Window (or double-click on the project). Cadence ICFB will then start and the Project Management Window will become disabled (as shown below).

Once Cadence ICFB is closed, the Project Management Window will be re-enabled.



To make a backup of your project, right-click on the project and select “Download Project” from the menu. Select the location to store the downloaded project and give it a name. Note that this will download the project from the server and store it on your local machine.

